

ACCESS



184

somfy.

Table of Contents

Access

Garage door

Motors

Dexxo Pro 800 RTS	188
Dexxo Pro 1000 RTS.....	189
Dexxo Optimo RTS.....	190

Receiver

Axroll [®]	191
Freeroll ESE RTS, RTS receiver for roller garage doors.....	192
Freeroll OSE RTS, RTS receiver for roller garage doors with a wireless optical safety edge.....	193

Accessories

RTS controls.....	194
Accessories.....	195
Resistive safety edge	198

Gates

Motors

Axovia Multi Pro [®]	199
Axovia 220A [®]	200
Axovia 300A [®]	201
Ixengo S.....	202
Ixengo L.....	203
Elixo 500.....	204

Accessories

RTS controls.....	205
Accessories	206

ACCESS

Home Motion opens, closes and secures garage doors and gates



Garage door motors from Somfy are durable, reliable and provide comfort in operation and use.

ACCESS

Enter your property without getting out of your car

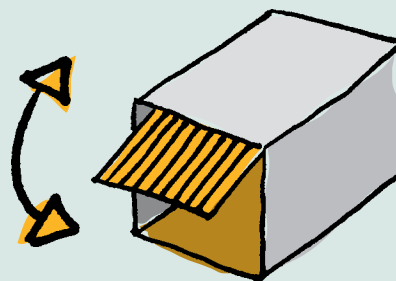
Motors from Somfy take care of the inconvenient opening and closing operations of the garage door or gate. You come home, the gate is opened automatically and you drive into the garage. No more getting wet while it's raining and the integral light ensures you never arrive in the dark. Somfy garage door motors can be operated from outside using a key switch or a keypad by entering a secure code. You can open or close the door or gate easily from the car using a remote control, which works via a rolling code radio signal. As the radio signal is secure, you are always certain that unauthorised people cannot gain access to your garden or garage. With a simple button press you can also open the door from inside the garage.

Anything is possible

Wind and weather always play a role, whether a door will open easily or with more difficulty. The motor technology from Somfy always adapts to the prevailing circumstances and the door opens with precisely the force required at that time. The belt or chain tension ensures that the mechanism always operates evenly and smoothly and that the door closes softly. It doesn't matter what type of garage door you want to automate. Somfy motors are as suitable for up & over, sectional, side hinged, lateral or roller garage doors.

Safe and secure

Your family and property are always protected. If an obstacle gets in the way during travel, the door or gates stop immediately and reverse direction. The automatic operation of the door and gates also ensures that it moves smoothly without strain. And when the garage door or gates are closed, they automatically lock preventing unwanted intrusion.



Convenience: you can open and close your garage door using the Somfy remote control



To ensure safety for children, the motor for your garden gate is equipped with an integrated obstacle detection system. The movement of the gate stops if there is an obstacle in the way.

Somfy benefits:

- Convenient opening and closing of the garage door and garden gates from the car via a remote control.
- Secure opening from the outside using a key switch and from the inside using an internal button.
- Integrated obstacle detection safeguard.
- Locking system preventing unauthorised access.
- Manual over-ride facility in the case of a power cut.
- All settings are retained during a power cut.
- Suitable for all standard garage doors and gates.
- All accessories required for installation are included.
- Wide range of accessories available.

No power? No problem!

All systems also have a manual emergency release system.

For garage door applications, an accessory can be added to provide an external manual release. The motor is disconnected if the emergency release is used and the door or gate can be moved freely.

Assembly and warranty

Every Somfy garage door and gate motor is supplied in a pack that includes all the necessary installation parts. Somfy offers a 3 year warranty on gate automation products and a 5 year warranty on the Dexxo garage door motor range.

Dexxo Pro 800 RTS



Dexxo Pro 800 RTS

Automation of up & over doors, sectional doors, side hinged and lateral doors.

Product benefits

- Suitable for the automation of:
 - Door surfaces up to 9m².
 - Up & over doors with a max. height of 3.15 m.
 - Sectional doors with a max. height of 3 m.
- Simple wiring of accessories with removable terminal block.
- Integrated lighting.
- Connection and independent control of external lighting is possible.
- High quality performance: up to 90,000 cycles.
- 5 year warranty on the motor and rail.
- Compatible with RTS control range.
- Simple to install.
- The system can be commissioned in 90 seconds.
- Easy to set parameters via a LCD display.
- Built in obstacle detection whereby the motor complies 100% to the European standard.
- The sensitivity of the obstacle detection can be adjusted.
- Partial opening (ventilation position) can be set.
- Soft stop and start.
- Belt and chain rails available.

Dexxo Pro 800 RTS

	Reference number
Dexxo Pro 800 RTS	1 216 168
2.9M single chain rail	9 013 811
2.9M 2 part chain rail	9 013 812
3.5M single chain rail	9 013 813
3.5M 2 part chain rail	9 013 814
2.9M single belt rail	9 013 815
2.9M 2 part belt rail	9 013 816
3.5M single belt rail	9 013 817
3.5M 2 part belt rail	9 013 818
2.9M high cycle chain rail	9 013 819
3.5M high cycle chain rail	9 013 820

Technical data

Main technical data:

Supply voltage:	230 V - 50 Hz
Motor voltage:	24 V
Max. consumption in use:	350 W
Tensile strength:	800 N
Max. surface area of the door:	9 m ²
External length	
- Rail 2.90 m:	3.24 m
- Rail 3.50 m:	3.74 m
Rail height:	3.2 cm
Number of programmable remote controls:	32
Max. number of cycles:	
- Standard rails	20 cycles/ day
- High cycle rail	50 cycles/ day
Remote control frequency:	433.42 Mhz
Operating temperature:	-20°C/ +60°C
Weight of the motor:	6.98 kg
Light (supplied)	
- voltage:	230 V
- capacity:	40 W
- lamp:	E 14
Maximum load of the external lighting:	230 V/ 500 W, Class I
Speed on opening:	18 cm/ s max.
Warranty:	5 years

Dexxo Pro Pack comprises:

- 1 Motor head unit with integrated light and receiver.
- 2 Transmitters.
- 1 40W light.
- 1 Door support and 1 lintel support.
- Connecting arm.
- Attachment hooks for the motor.
- 1 Bag with screws and installation parts.

Access >> Motors for garage doors

(188)

somfy®

Dexxo Pro 1000 RTS



Dexxo Pro 1000 RTS

Automation of up & over, sectional, side hinged and lateral doors.

Product benefits

- Suitable for the automation of:
 - Door surfaces up to 15 m².
 - Up & over doors with a max. height of 3.15 m.
 - Sectional doors with a max. height of 3 m.
- Simple wiring of accessories with removable terminal block.
- Integrated lighting.
- Connection and independent control of external lighting is possible.
- High quality performance: up to 90,000 cycles.
- 5 year warranty on the motor and rail
- Compatible with RTS control range.
- Simple to install.
- The system can be commissioned in 90 seconds.
- Easy to set parameters via a display.
- Built in obstacle detection whereby the motor complies 100% to the European standard.
- The sensitivity of the obstacle detection can be adjusted.
- Partial opening (ventilation position) can be set.
- Soft stop and start.
- Belt and chain rails available.

Dexxo Pro 1000 RTS

	Reference number
Dexxo Pro 1000 RTS	1 216 169
2.9M single chain rail	9 013 811
2.9M 2 part chain rail	9 013 812
3.5M single chain rail	9 013 813
3.5M 2 part chain rail	9 013 814
2.9M single belt rail	9 013 815
2.9M 2 part belt rail	9 013 816
3.5M single belt rail	9 013 817
3.5M 2 part belt rail	9 013 818
2.9M high cycle chain rail	9 013 819
3.5M high cycle chain rail	9 013 820

Technical data

Main technical data:

Supply voltage:	230 V
Motor voltage:	24 V
Max. consumption in use:	350 W
Tensile strength:	1000 N
Max. surface area of the door:	15 m ²
External length	
- Rail 2.90 m:	3.24 m
- Rail 3.50 m:	3.74 m
Rail height:	3.2 cm
Number of programmable remote controls:	32
Max. number of cycles:	
- Standard rails	20 cycles/ day
- High cycle rail	50 cycles/ day
Remote control frequency:	433.42 Mhz
Operating temperature:	-20°C/ +60°C
Weight of the motor:	6.98 kg
Light (supplied)	
- Voltage:	230 V
- Capacity:	40 W
- Lamp	E 14
Maximum load of the external lighting:	230 V/ 500 W, Class II
Speed on opening:	18 cm/ s max.
Warranty:	5 years

Dexxo Pro Pack comprises:

- 1 Motor with integrated light and receiver.
- 2 Transmitters.
- 1 40W light.
- 1 Door support and 1 lintel support.
- 1 Connecting arm.
- Attachment hooks for the motor.
- 1 Bag with screws and installation parts.

Access >> Motors for garage doors

(189)

somfy®

Dexxo Optimo RTS



Dexxo Optimo RTS

Automation of up & over and sectional doors.

Product benefits

- Suitable for the automation of:
 - Door surfaces up to 9 m².
 - Up & over doors with a max. height of 3.15 m.
 - Sectional doors with a max. height of 3 m.
- Simple wiring of accessories.
- Integrated lighting.
- High quality performance: up to 36,500 cycles.
- 5 year warranty on the motor and rail.
- Compatible with RTS control range.
- Simple to install.
- Easy to set parameters via 4 keys.
- Built in obstacle detection whereby the motor complies 100% to the European standard.
- The sensitivity of the obstacle detection can be adjusted.
- Soft stop and start.
- Belt and chain rails available.

Technical data

Main technical data:

Supply voltage:	230 V - 50 Hz
Motor voltage:	24 V
Max. consumption in use:	350 W
Tensile strength:	800 N
Max. surface area of the door:	9 m ²
External length	
- Rail 2.90 m:	3.24 m
- Rail 3.50 m:	3.74 m
Rail height:	3.2 cm
Number of programmable remote controls:	32
Max. number of cycles:	
- Standard rails	20 cycles/ day
Remote control frequency:	433.42 Mhz
Operating temperature:	-20°C/ +60°C
Light (supplied)	
- voltage:	230 V
- capacity:	40 W
- fitting:	E 27
Warranty:	5 years
Speed on opening:	14 cm/ s max.

Dexxo Optimo RTS

	Reference number
Dexxo Optimo RTS	1 216 127
2.90 m single chain rail	9 013 811
2.90 m 2 part chain rail	9 013 812
3.50 m single chain rail	9 013 813
3.50 m 2 part chain rail	9 013 814
2.90 m single belt rail	9 013 815
2.90 m 2 part belt rail	9 013 816
3.50 m single belt rail	9 013 817
3.50 m 2 part belt rail	9 013 818

Dexxo Optimo Pack comprises:

- 1 Motor head unit with integrated receiver.
- 1 Transmitter type Keytis 2^{NS}.
- 1 40W light.
- 1 Door support and 1 lintel support.
- Connecting arm.
- Attachment hooks for the motor.
- 1 Bag with screws and installation parts.

Access >> Receivers for garage doors

(190)

somfy®

Axroll^{NS}

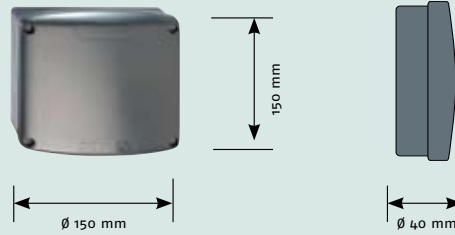


Rollertec receiver

Axroll^{NS}

For use with a standard tubular motor.

Technical data



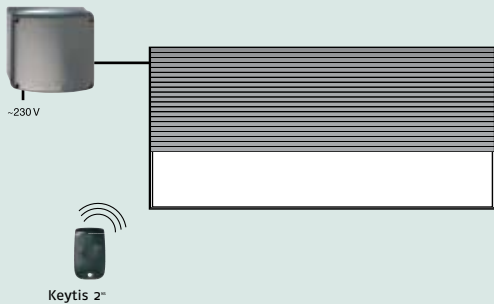
Product benefits

- Solution for all roller garage doors.
- Compatible with all Somfy remote controls.
- Easy to install and programme with LCD display.
- Set in sequential mode as standard.
- Parameters already set for 80% of the installation.
- 3 safety device options.
- Directly compatible with optical safety edge.

Main technical data:

Supply voltage:	230 Vac 50 Hz 3 A
Protection class:	IP 55
Operating temperature:	-15°C to + 55°C
Transmission frequency:	433.42 Mhz
Radio transmission range:	60m in free space
Weight:	680 g
Max. motor capacity:	230 Vac/ 750 W
Power supply for accessories:	24 Vdc
Max. power consumption of the accessories:	330 m A
Orange light:	4 V - 10 W max. or 230 V - 40 W max.
Zone lighting:	230 Vac, 500 W
Auxiliary contact:	NO contact
Resistive safety edge:	from 4 to 12 k0hm
Warranty:	3 years
Number of programmable remote controls:	32

Typical system



Axroll^{NS} receiver

	Reference number
Axroll^{NS} receiver	1 841 033
Axroll^{NS} Comfort Pack	1 841 035

Wireless controls

	Reference number
Keytis 2^{NS} transmitter	1 841 026
Keytis 4^{NS} transmitter	1 841 025
KeyGo transmitter	1 841 064

Axroll^{NS} Comfort Pack comprises:

- 1 Axroll^{NS} receiver.
- 1 Set of photoelectric cells^{NS}.
- 2 Keytis 2^{NS} type transmitters.

Access >> Receivers for garage doors

Freeroll ESE RTS, RTS receiver for roller garage doors



Rollertec receiver

Freeroll ESE RTS,
RTS receiver for roller
garage doors with
wireless electrical
safety edge

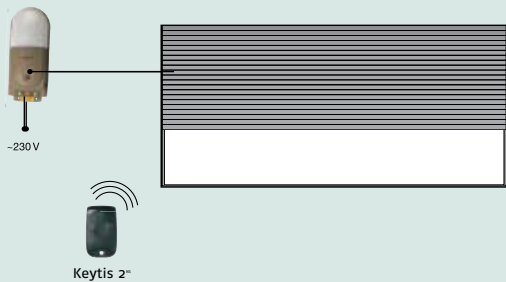
For use with a standard tubular
motor.



Product benefits

- Solution for all roller garage doors.
- Compatible with all Somfy RTS remote controls.
- Simple to install.
- Operation in sequential mode.
- Unique and patented wireless obstacle detection system.
- Control buttons on the Freeroll receiver.
- The transmitters are preprogrammed.
- Integrated lighting.
- Plug in connectors.
- Preassembled supply cable with plug.
- Feedback via multicolour LED.
- Wireless safety edge system.

Typical system



Main technical data:

Supply voltage:	220-240 Vac/ 50-60 Hz
Protection class:	IP 44
Operating temperature:	-15°C to + 55°C
Transmission frequency:	433.42 Mhz
Fuse:	T6 3AH 250 V
Motor capacity:	230 Vac SA
Input for safety-accessory:	1 for photoelectric cells
Power supply for accessories:	12 Vdc
Number of programmable remote controls:	36
Safety edge transmitter	
Power supply	4 Lithium batteries-CR 2032
Battery lifetime:	± 10 years
Protection class:	IP 54

Freeroll ESE RTS receiver

	Reference number
Freeroll ESE RTS kit	1 841 068
1 Freeroll RTS receiver. 2 Keytis 2 ^m type transmitters. 1 Transmitter for the safety edge Accessories.	
Rail 10 x 3 m	9 013 453
Kit with accessories for sealing the rubber	2 300 072
Alarm buzzer	9 014 397

Safety edge for Freeroll ESE RTS

	Item number.
Safety edge strip 2.5 m	2 300 058
Safety edge strip 3 m	2 300 059
Safety edge strip 3.5 m	2 300 060
Safety edge strip 4 m	2 300 061
Safety edge strip 4.5 m	2 300 062
Safety edge strip 5 m	2 300 063
Safety edge strip 5.5 m	2 300 064
Safety edge strip 6 m	2 300 065

Access >> Accessories
for garage doors

(192)

somfy®

Freeroll OSE RTS, RTS receiver for roller garage doors with a wireless optical safety edge



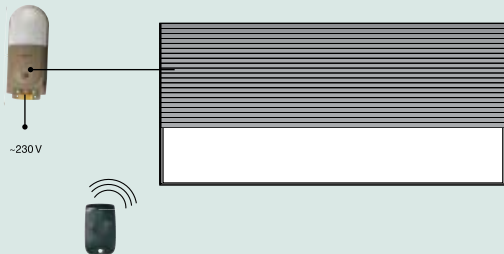
Freeroll OSE RTS, RTS receiver for roller garage doors with wireless electrical safety edge

For use with a standard tubular motor.

Product benefits

- Solution for all roller garage doors.
- Compatible with all Somfy remote controls.
- Simple to install.
- Operation in sequential mode.
- Unique and patented wireless obstacle detection system.
- Control buttons on the Freeroll receiver.
- The transmitters are preprogrammed.
- Integrated lighting.
- Plug in connectors.
- Preassembled supply cable with plug.
- Feedback via multicolour LED.
- Wireless safety edge with optical contact.

Typical system



Technical data



Main technical data:

Supply voltage:	220-240 Vac/ 50-60 Hz
Protection class:	IP 44
Operating temperature:	-15°C to + 55°C
Transmission frequency:	433.42 Mhz
Fuse:	T6 3AH 250 V
Motor capacity:	230 Vac SA
Input for safety accessory:	1 for photoelectric cells
Power supply for accessories:	12 Vdc
Number of programmable keys on the remote control:	36
Safety edge transmitter	
Power supply 2032	4 Lithium batteries-CR
Battery lifetime:	± 10 years
Protection class:	IP 54

Freeroll OSE RTS receiver with optical safety edge

Reference number

Freeroll OSE RTS kit

1 Freeroll RTS receiver.
2 Keytis 2+ type transmitters.
1 Safety edge transmitter
Accessories.

Optical safety edge strips for Freeroll OSE RTS

Reference number

Safety edge strip 2.5 m

Safety edge strip 3 m

Safety edge strip 3.5 m

Safety edge strip 4 m

Safety edge strip 4.5 m

Safety edge strip 5 m

Safety edge strip 5.5 m

Safety edge strip 6 m

Access >> Accessories for garage doors

(193)

somfy®

RTS controls for the Dexxo motors and Axroll^{NS} - Freeroll receivers



4 Channel radio remote

Reference number

Keytis 4[®] **1 841 025**

- Key lock function.
- Frequency: 433.42 Mhz + rolling code.
- Low battery warning light.
- Choice between 4 different coloured clips.
- Operating temperature: -20°C/ +70°C.



2 Channel radio remote

Reference number

Keytis 2[®] **1 841 026**

- Frequency: 433.42 Mhz + rolling code.
- Low battery warning light.
- Choice between 4 different coloured clips.
- Operating temperature: -20°C/ +70°C.



4 Channel radio handset

Reference number

Telis 4 RTS Pure **1 810 631**

- Frequency: 433.42 Mhz + rolling code.
- Operating temperature: 0°C/ +60°C.



2 Channel wireless wall switch

Reference number

Radio wall switch RTS **1 841 027**

- Frequency: 433.42 Mhz + rolling code.
- Operating temperature: -20°C/ +70°C.



2 Channel wireless radio keypad

Reference number

Radio keypad RTS **1 841 030**

- Illuminated keypad
- Choice between 4, 5 or 6 digit combinations.
- Different codes for different users.
- Low battery warning light.
- Easy to install.
- IP 55.
- 2 channels.



4 Channel radio key ring remote

Reference number

Keygo 4 RTS **1 841 064**

- 4 channel transmitter.
- Metal ring to attach keys.
- Choice of 4 coloured rubber button caps.
- Quality finish.

ACCESS

Access >> Accessories for garage doors

Accessories for Dexxo Pro RTS motors and for the Axroll^{NS} - Freeroll RTS receivers



Photoelectric cells

Reference number

Photoelectric cells **9 012 763**

- Easy to assemble.
- Aesthetic design and discrete wiring.
- 1 transmitter + 1 receiver.
- Range: 10 m
- Operating temperature: -20°C/ +60°C.
- IP 54.



Orange light 25W

Reference number

Orange light: **9 014 082**

Orange flashing light 24V **9 014 377**

- Easy to assemble.
- 24 Vdc - 25W.
- Operating temperature: -20°C/+60°C.
- Integrated antenna.
- Metal base.



Key switch

Reference number

Key switch **1 841 028**

- 2 volt free contacts.
- Easy to install.
- IP 54.
- For 24 or 12 V, max. 2 A.
- Supplied with 2 keys.



Wired keypad^{NS}

Reference number

Wired Keypad **2 400 581**

- Illuminated keypad.
- Feedback.
- Anti-vandalism.



Door contact

Reference number

Door contact **2 400 657**

- Prevents operation when the wicket door is open.



Orange flashing light

Reference number

Orange flashing light **9 015 034**

- Orange flashing light.
- Metal base.



Accessories for Dexxo Pro RTS motors and for the Axroll^{NS} - Freeroll RTS receivers



Lighting receiver RTS 500W

Reference number

Lighting receiver RTS 1 810 628

- For control of lighting using an RTS remote control.

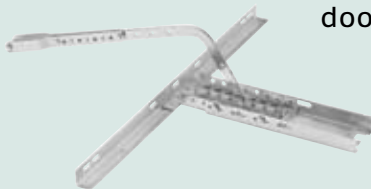


Standard RTS receiver

Reference number

Standard RTS receiver 1 841 022

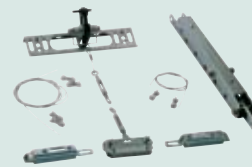
- Receiver providing 2 volt free contacts.
- Requires 24V AC/DC.
- Number of controls that can be memorised: 12.
- Dimensions: 110 X 110 X 40 mm.



Adapter for sectional doors

Reference number

Adapter for sectional doors 2 400 650



Garage door floor lock

Reference number

Floor bolt 2 400 651

- Mechanical accessory that provides a locking function for up & over doors.

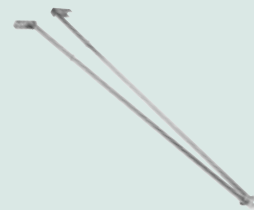


Battery back-up pack

Reference number

Battery back-up pack 9 001 001

- To provide emergency power in the event of a power cut.
- Autonomy: Up to 10 open/close cycles in 24 hours.

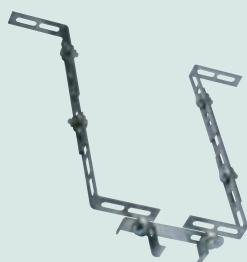


Swing door adapter

Reference number

Swing door adapter kit 2 400 459

- Accessory to automate swing or side hinged garage doors.



Adjustable fixing bracket for Dexxo rail

Reference number

Adjustable fixing bracket 9 014 462

Access >> Accessories for garage doors

ACCESS

Accessories for Dexxo Pro RTS motors and Axroll^{MS} receiver



Reflective cells

Reference number

Reflective photocells **9 013 647**

Spiral cable

Reference number

Spiral cable 3 m **2 564 404**



Amplifier kit for wired safety edge

Reference number

Amplifier kit **2 564 401**

- Transformer for the signal from the safety edge TSU and TSIU.

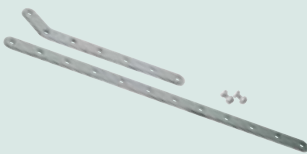


Antenna

Reference number

Antenna **2 400 472**

- Enhances radio reception range.



Adjustable connecting arm for lateral doors

Reference number

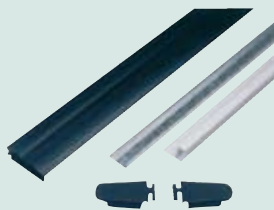
Adjustable connecting arm **9 014 481**



Hinged connecting arm for lateral doors

Reference number

Hinged connecting arm **9 014 482**



Ultrasonic safety edge

Reference number

With profile height 110 mm L = 2 m	2 564 412
With profile height 110 mm L = 3 m	2 564 413
With profile height 110 mm L = 5 m	2 564 415
With profile height 110 mm L = 6 m	2 564 416
With profile height 65 mm L = 2 m	2 564 422
With profile height 65 mm L = 3 m	2 564 423
With profile height 65 mm L = 4 m	2 564 424
With profile height 65 mm L = 5 m	2 564 425
With profile height 65 mm L = 6 m	2 564 426

Access >> Accessories for garage doors

Axroll^{NS} resistive safety edge for roller doors

Resistive safety edge for roller doors

The safety edge provides the signal to stop the movement of the door if an obstacle is detected.

Product benefits

- The Axroll^{NS} solution conforms to the European standard.
- Simple to install: can be connected immediately to the safety input of the Axroll^{NS} without the addition of an extra relay.
- Aesthetic: profile is adapted to that of the roller door.

Aluminium rail



- Aluminium rail 3 m.

Accessories.

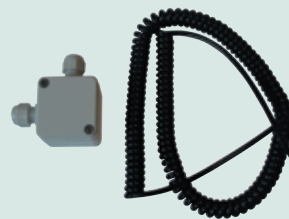


- This kit is required to connect the contact strip on an Axroll^{NS}-control and to seal the rubber profile.
- Comprises two stoppers, watertight stops, two connectins and adhesive.

Axroll safety edge

	Reference number
Rubber profile 50 m.	9 013 451
Contact strip 50 m.	9 013 452
Aluminium rail 3 m x 10 units	9 013 453
Accessories.	9 013 454
Connection kit	9 013 456
Pincers	9 013 457

Connection kit



- This kit is also necessary to connect a safety edge on an Axroll^{NS}-control.
- Comprises a junction box and a 3 m spiral cable.

Rubber profile



- Rubber profile 50 m.
- The contact strip is slid onto the rubber profile.

Pincers



Contact strip



- Contact strip 50 m.

Access >> Accessories for garage doors

Axovia Multi Pro^{MS}

Axovia Multi Pro^{MS}

Multi-arm automation for swing gates.



Product benefits

- Universal, for all swing gates.
- Up to 300kg and 2.5M per gate leaf.
- Fast opening, 90° in 15 sec.
- Manual release system.
- Max opening: up to 150°.
- Can also be used for gates or on sloping drives (< 20°).
- Supplied with 2 transmitters.
- Up to 40 openings and closings per day.
- Supplied with a separate Ax24 control unit.
- With integrated stoppers.

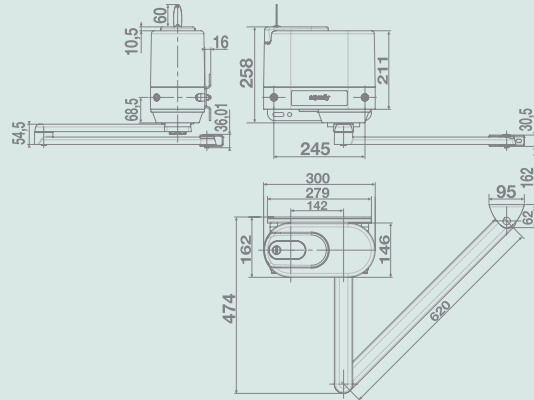
Axovia Multi Pro^{MS}

	Reference number
Axovia Multi standard kit	1 216 090
Opening inwards up to 120°.	
Axovia Multi kit for large openings	1 216 088
Opening inwards up to 150°.	
Axovia Multi kit for outward opening	1 216 087
For gates that open outwards.	
Axovia Multi kit sloping drive	1 216 089
For sloping / rising drives with up to 20% incline.	

Contents of a pack:

- 2 motors.
- 2 Remote controls.
- 1 Electronic Ax24^{MS} RTS control.
- 1 Antenna cable.
- 1 Set of screws, bolts and installation parts.
- 1 Installation manual and drilling template.

Technical data



Main technical data:

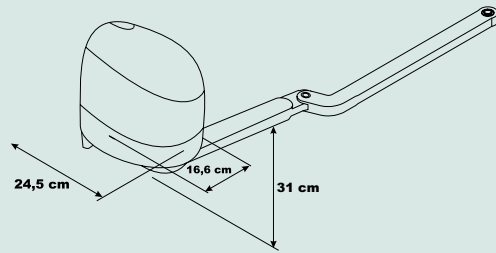
Supply voltage:	220–240V
Motor voltage:	24 V
Max. consumption in use:	130 W
Number of movements a day	40 cycles
Force:	305 Nm
Speed:	2.4 tpm
Consumption:	5.3 Amps
Operating temperature:	-20°C/ +60°C
External disconnection:	standard
Internal disconnection:	optional
IP (with covering cap):	IP 54
Weight of the standard kit:	14.5 kg
Warranty	3 years

Axovia 220A^{NS}



Axovia 220A^{NS}
Arm automation
for swing gates.

Technical data



Product benefits

- For all swing gates.
- Up to 200kg and 2M per gate leaf.
- Opening angle up to 120°.
- Manual release system.
- Automatic programming.
- The control unit is mounted inside the motor casing.

Main technical data:

Supply voltage:	220–240V
Motor voltage:	24 V
Max. consumption in use:	120 W
Zone lighting:	500 W max.
Outlet for power supply accessories:	24 Vdc/ 200mA
Volt free contact	Yes
Max. thrust at 1.25 m: (according to standard EN12453)	<15 kg
Remote control frequency:	433.42 Mhz
Max. number of remote controls:	32
IP (with covering cap):	IP 54
Operating temperature:	-20°C/ +60°C
Tested for 36 000 cycles	
Warranty:	3 years

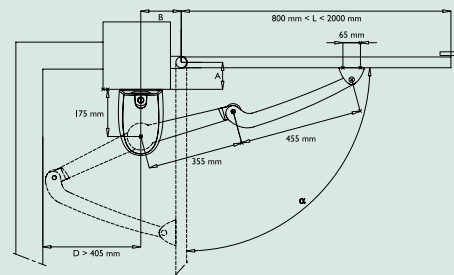
Axovia 220A^{NS}

	Reference number
Axovia 220A^{NS}	1 216 080

Contents of a pack:

- 2 motors.
- 2 Remote controls 2 channels.
- 1 RTS control unit.
- 1 Antenna cable.
- 1 Set of screws, bolts and installation parts.
- 1 Installation manual and drilling template.

Assembly:



A	max (°)	B
0	120	205
0	110	160
0	105	150
50	100	150
100	95	150
150	90	150
200	90	150
250	90	150

ACCESS

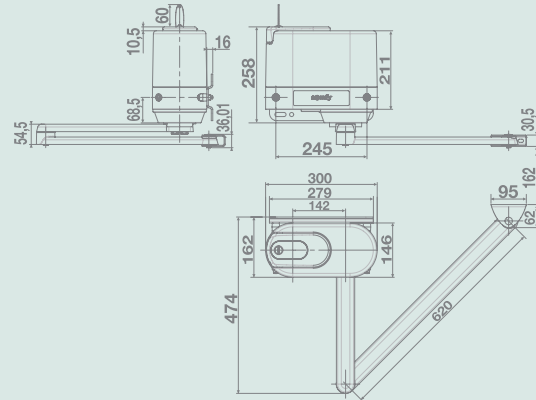
Axovia 300A^{NS}

Axovia 300A^{NS}

Arm automation for swing gates.



Technical data



Product benefits

- For all swing gate applications.
- Up to 200 kg and 2M per gate leaf.
- Opening angle up to 120°.
- Manual release.
- Automatic programming.
- The control unit is mounted inside the motor casing.
- With built-in stoppers.

Main technical data:

Supply voltage:	220-240V
Motor voltage:	24 V
Max. consumption in use:	120 W
Zone lighting:	500 W max.
Outlet for power supply accessories:	24 Vdc/ 200mA
Volt free contact	Yes
Max. thrust at 1.25 m: (according to standard EN12453)	<15 kg
Remote control frequency:	433.42 Mhz
Max. number of remote controls:	32
IP (with covering cap):	IP 54
Operating temperature:	-20°C/ +60°C
Tested for	36 000 cycles
Warranty:	3 years

Axovia 300A^{NS}

	Reference number
Axovia 300A ^{NS} -standard kit	1 216 134
Axovia 300A ^{NS} -Comfort kit	1 216 135

Contents of a standard kit:

- 2 motors.
- 2 Remote controls 2 channels.
- 1 RTS control unit.
- 1 Antenna cable.
- 1 Set of screws, bolts and installation parts.
- 1 Installation manual and drilling template.

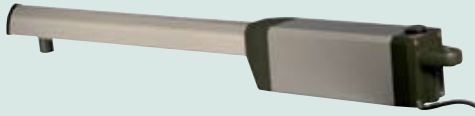
Extra accessories in a Comfort kit:

- Set of photoelectric cells.
- Battery back-up pack.
- Orange light.

Ixengo S

Ixengo S

Screw drive motors for swing gates.



Product benefits

- For metal and wooden gates.
- Silent operation.
- Manual release.
- Integrated magnetic stoppers.
- Compact solution.
- Opening speed, 90° in 18 sec.
- For gates up to 2.5 m and 180 kg.
- Built-in obstacle detection in accordance with the European standard.

Technical data

Main technical data:

Supply voltage:	220–240V
Motor voltage:	24 Vdc
Max. consumption in use:	1.5 A.
Zone lighting:	500 W max.
Orange light:	24 V - 15 W
Max. thrust at 1.25 m: (according to standard EN12453)	<15 kg
Remote control frequency:	433.42 Mhz
Max. number of remote controls:	16
IP (with control):	IP 55
IP (motor):	IP 44
Operating temperature:	-10° C/ +50° C
Tested for	36 500 cycles
Number of operations per day	60 cycles
Warranty:	3 years

	Reference number
Ixengo S standard kit	1 216 136
Ixengo S Comfort kit	1 216 160

Contents of a standard kit:

2 Motors.
2 Brackets.
2 Keytis 4* remote controls.
1 RTS control unit.
1 Antenna cable.
1 Set of screws, bolts and installation parts.
1 Installation manual.

Extra accessories in a Comfort kit:

Orange light.
Set of photocells.

Ixengo L

Ixengo L

Screw drive motors for swing gates.

Product benefits

- For metal and wooden gates.
- Silent operation.
- Manual release.
- Integrated magnetic stoppers.
- Compact solution.
- Opening speed, 90° in 18 sec.
- For gates up to 4 m and 400 kg.
- Built-in obstacle detection in accordance with the European standard.

Ixengo L

	Reference number
Ixengo L standard kit	1 216 137
Ixengo L Comfort kit	1 216 162

Contents of a standard kit:

2 Motors.
2 Brackets.
2 Keytis 2 ^e remote controls.
1 RTS control unit.
1 Antenna cable.
1 Set of screws, bolts and installation parts.
1 Installation manual.

Extra accessories in a Comfort kit:

Orange light.
Set of photocells.

Technical data

Main technical data:

Supply voltage:	220–240V
Motor voltage:	24 Vdc
Max. consumption in use:	1.5 A.
Zone lighting:	500 W max.
Orange light:	24 V - 15 W
Max. thrust at 1.25 m: (according to standard EN12453)	<15 kg
Remote control frequency:	433.42 Mhz
Max. number of remote controls:	16
IP (with control):	IP 55
IP (motor):	IP 44
Operating temperature:	-10° C/ +50° C
Tested for 36 500 cycles	
Number of operations per day	60 cycles
Warranty:	3 years

Elixo 500



Elixo 500 RTS 24V

Automation for
sliding gates.

Technical data

Main technical data:

Supply voltage:	220–240V
Motor voltage:	24 V
Remote control frequency:	433.42 Mhz
Max. number of remote controls:	32
IP (with covering cap):	IP 24
Operating temperature:	-15°C/ +60°C
Number of operations per day:	30
Warranty:	3 years

Product benefits

- Suitable for all types of sliding gates.
- Quick opening and closing: 20 cm/s.
- LED control with multilingual software.
- Manual release with a key.
- Auto set mode for quicker setting.
- Adjustable parameters.
- Solid aluminium base.
- For gates up to 500 kg.
- For residential and small collective use.
- Integrated obstacle detection to comply with all European standards.
- Automatic closure adjustable to 120s.
- Fixed pedestrian opening: 7s.

Elixo 500

	Reference number
Elixo 500 standard kit	1 216 140
Elixo 500 Comfort kit	1 216 157
1 m rack	
- fixing position at the top	9 011 089
- fixing position at the bottom	9 011 090

Contents of a standard kit:

1 Motor.
1 Integrated electronic control.
1 RTS receiver.
2 Standard transmitters.
Screws and installation components.
1 Installation manual.

Extra accessories in a Comfort kit:

Orange light.
Set of photocells.

Access >> Motors for
garden gates

(204)

somfy®

RTS controls for Axovia, Ixengo and Elixo motors



4 Channel radio remote

Reference number

Keytis 4 RTS

1 841 025

- Key lock function.
- Frequency: 433.42 Mhz + rolling code.
- Low battery warning light.
- Choice between 4 different coloured clips.
- Operating temperature: -20°C/ +70°C.



2 Channel radio remote

Reference number

Keytis 2 RTS

1 841 026

- Frequency: 433.42 Mhz + rolling code.
- Low battery warning light.
- Choice between 4 different coloured clips.
- Operating temperature: -20°C/ +70°C.



4 Channel radio handset

Reference number

Telis 4 RTS Pure

1 810 631

- Frequency: 433.42 Mhz + rolling code.
- Operating temperature: 0°C/ +60°C.



2 Channel radio wall switch

Reference number

Radio wall switch RTS

1 841 027

- Frequency: 433.42 Mhz + rolling code.
- Operating temperature: -20°C/ +70°C.



Radio keypad

Reference number

Radio keypad RTS

1 841 030

- Illuminated keypad.
- Choice between 4, 5 or 6 digit combinations.
- Different codes for different users.
- Low battery warning light.
- Easy to install.
- IP 55.
- 2 Channels.



4 Channel radio keyring remote

Reference number

Keygo 4 RTS

1 841 064

- 4 Channel transmitter.
- Broad metal ring to attach to a keyring.
- Choice of 4 coloured rubber button caps.
- Quality finish.

Access >> Accessories for gates

(205)



ACCESS

Accessories for Axovia, Ixengo and Elixo motors



Photoelectric cells^{NS}

Reference number

Photoelectric cells^{NS} **9 012 763**

- Easy to assemble.
- Aesthetic design and discrete wiring.
- 1 Transmitter + 1 receiver.
- Range: 10 m
- Operating temperature: -20°C/ +60°C.
- IP 54.



Orange light 10W

Reference number

Orange light 10 W **9 012 762**

- Easy to assemble.
- 24 Vdc.
- Operating temperature: -20°C/ +60°C.



Key switch

Reference number

Key switch **1 841 028**

- 2 Volt free contacts.
- Easy to assemble.
- IP 54.
- For 24 or 12 V, max. 2 A.
- Supplied with 2 keys.



Wired keypad^{NS}

Reference number

Wired keypad^{NS} **2 400 581**

- Illuminated keypad.
- Feedback.
- Anti-vandalism.



Battery back-up pack

Reference number

For Axovia 220A^{NS} and 300A^{NS} **9 001 001**

- To provide emergency power.
- Autonomy: Up to 10 open/close cycles in 24 hours.



Intercom

Reference number

Intercom **2 400 552**



Battery back-up pack for Ixengo S & L

Reference number

For Ixengo S & L **9 014 611**



Adjustable bracket for Ixengo S motors

Reference number

Adjustable support **9 014 609**



Battery back-up pack for Elixo 500

Reference number

For Elixo 500 **9 014 612**

ACCESS

Access >> Accessories for garden gates

Accessories for Axovia, Ixengo and Elixo motors



Antenna

Reference number

Antenna **2 400 472**

- Enhances the radio reception range.



Standard RTS receiver

Reference number

Standard RTS receiver **1 841 022**

- Receiver providing 2 volt free contacts.
- 24V AC/DC.
- Number of controls that can be memorised: 12.
- Dimensions: 110 X 110 X 40 mm.



Cable duct

Reference number

Cable duct **9 001 009**

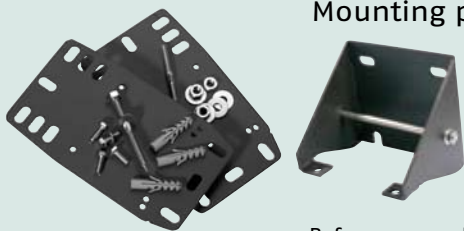


Stoppers

Reference number

Gate travel stoppers **2 400 486**

- Only for Axovia motors.



Mounting plates

Reference number

For Axovia 220A[®] **2 400 485**

- For easier installation on posts with irregular masonry.
- Only for Axovia motors.

For Axovia 300A[®] and MultiPro[®] **9 014 360**



1 m sliding gate rack

Reference number

Fixing position at the bottom **9 011 089**